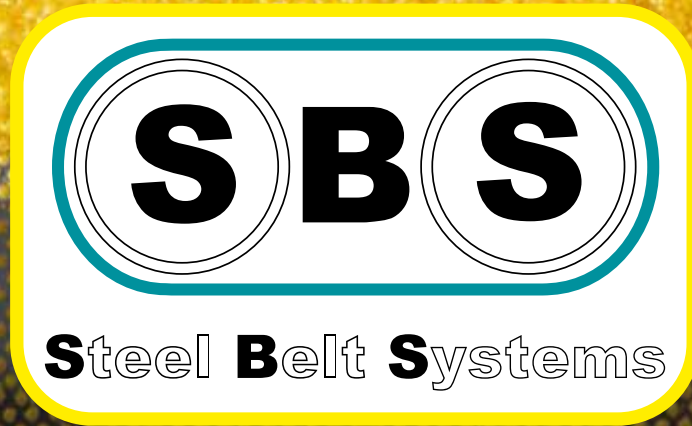


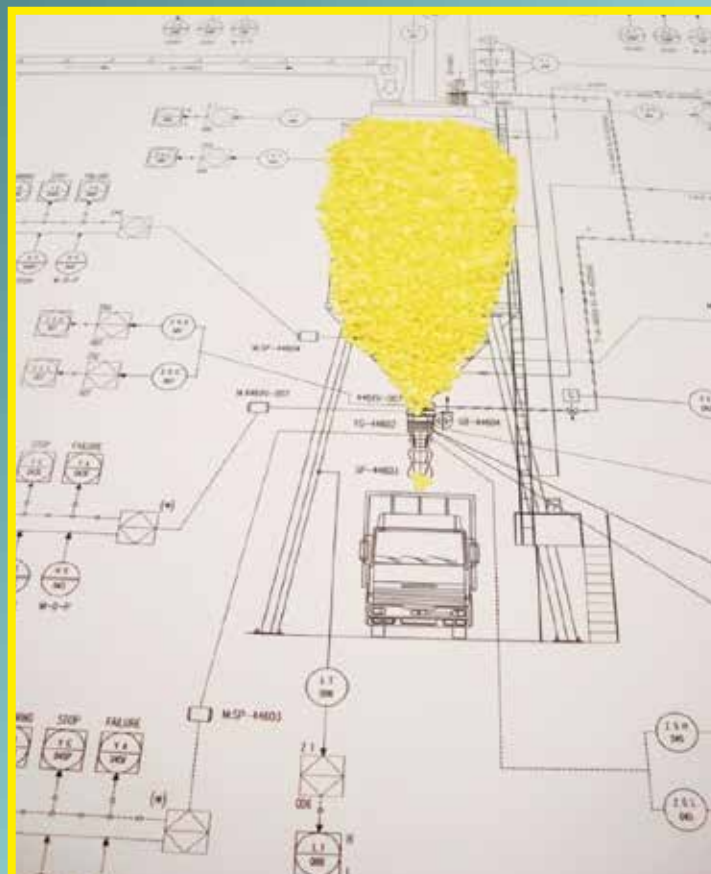
LIQUID SULPHUR SOLIDIFICATION PACKAGE



PARTNER OF



Sulphur



Liquid Sulphur characteristics

Operating temperature, °C	130/140
Density @ P, T, kg/m ³	1770/1780
Viscosity, mPas	8 @ 140 °C
Sulphur content, % weight	Not less than 99,5%
H ₂ S content, ppm weight	10 as normal – 20 as max (degassed liquid sulphur)
Operating pressure	3 bar

Solid Sulphur characteristics

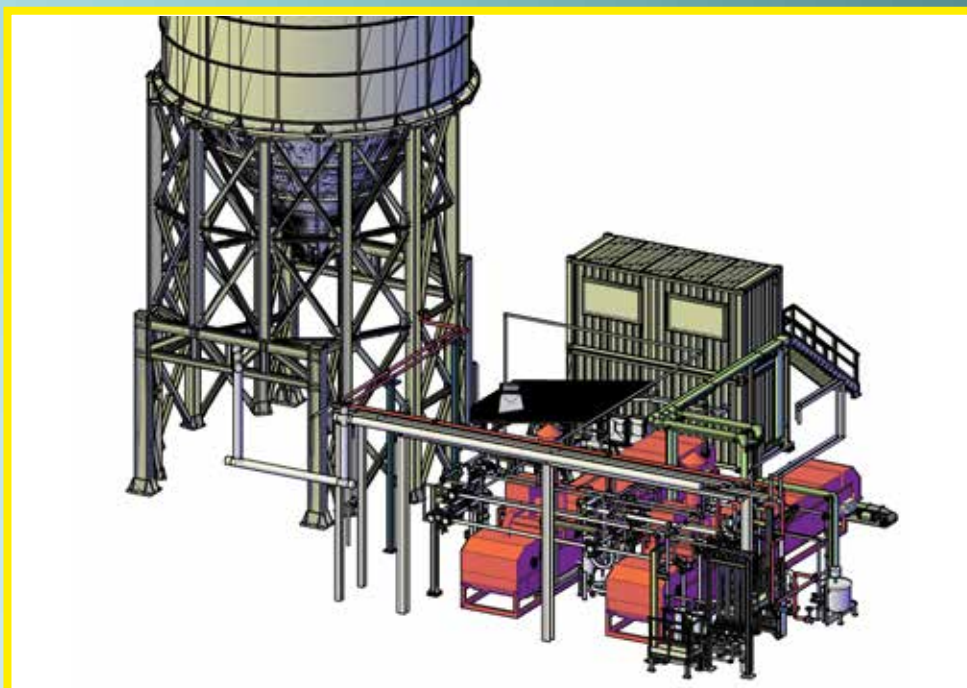
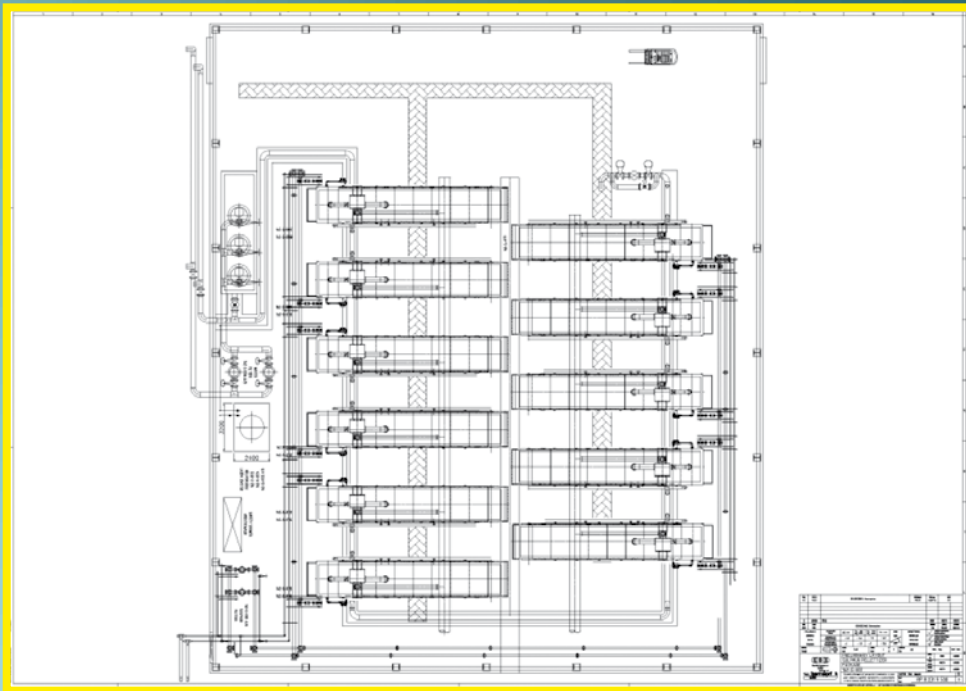
Shape	Spherical or hemispherical
Size	2 - 6 mm
Moisture content (water)	Less than 0,5% weight
Bulk density, kg/m ³	Not less than 1.040 as loose
Angle of repose, degrees	In the range of 28° - 30°
Friability performance	Less than 2% fines generated under standard Stress level II test

Typical SBS Steel Belt Systems scope of supply

- Sulphur pumps and sulphur pre-conditioner
- Duplex Basket Filter Arrangement
- Cooling Conveyors complete with pastillator
- Release Medium Preparation system
- Electrical Equipment for solidification area
- Exhaust Tunnel complete with fan
- Belt conveyor for solid sulphur collecting
- Upstream equipment
- Downstream equipment as bucket elevators & storage systems
- Water loop circuit
- Set of spare parts and consumables for the commissioning
- Centralized suction systems



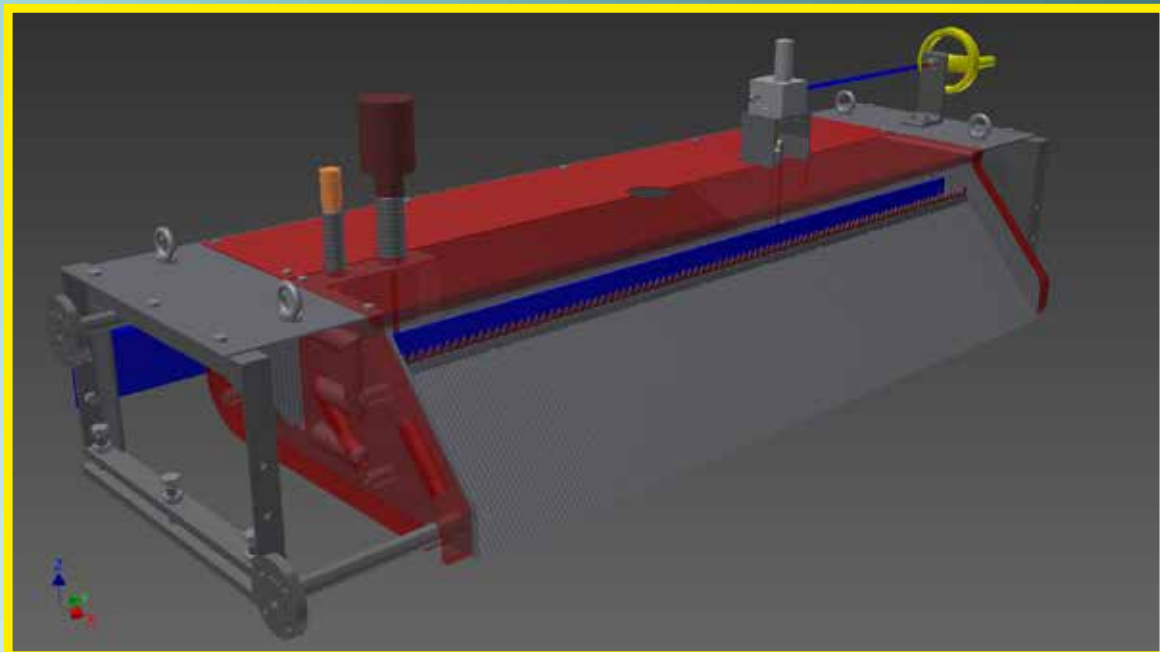
Layout



SBS Steel Belt Systems solidifier



Sulphur flakes Feeder



Sulphur pastilles



Sulphur pastilles feeder Accudrop



SBS Steel Belt Systems Cooler

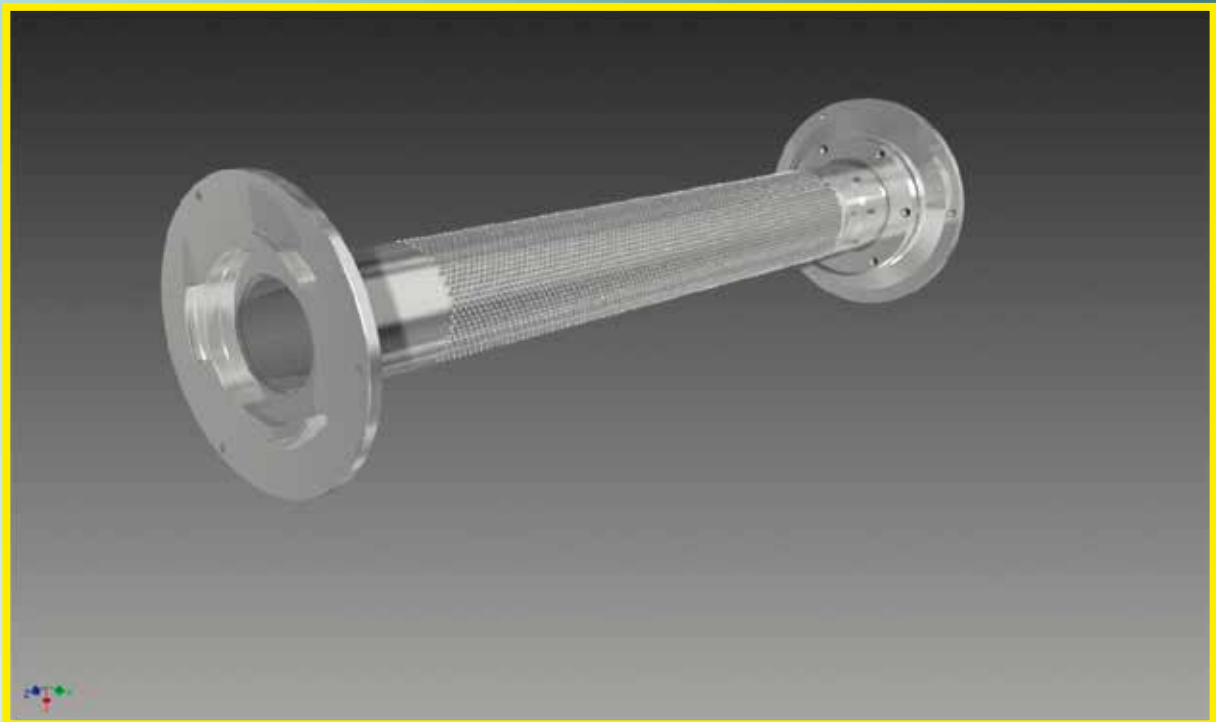
Technical characteristics:

- Stainless steel belt BERNDORF NICRO 12.1 mill finished, with two Vee-ropes at 25 mm from the edges.
- Endless welded - thickness 1.0 mm \pm 0.1 mm / 1.2 mm + 0.1 mm
- Width: 1.500 mm + 1 mm / 2.000 mm + 1 mm
- Conveyor center-center distance: 10.670 mm
- Conveyor overall length: 12.400 mm / 12.800 mm
- Cooling length: 9.140 mm / 9.100 mm
- Cooling width: 1.400 mm / 1.900 mm
- Belt speed: 20 - 80 m/min adjustable
- Product to be cooled down: sulphur in pastilles 2-6 mm dia
- Capacity: max. 5,5 Ton/h / 7,0 Ton/h

For Sulphur pastilles



OUTERSHELL ACCUDROP



Release Agent DEVICES



Water and Sulphur filters



Sulphur valves



Water loop



Sulphur handling





SBS STEEL BELT SYSTEMS s.r.l.

Via E. Mattei, 3 – 21040 Venegono Inf. (VA) - ITALY

Tel. (+39) 0331 864841 – Fax (+39) 0331 864959

Info@steelbeltsystems.it / www.steelbeltsystems.it

ALLIED COMPANY

BERNDORF BAND GmbH

Leobersdorfer Strasse, 26

A-2560 Berndorf - AUSTRIA

Tel. (+43) 2672 800-0 / Fax. (+43) 2672 84176

band@berndorf.co.at

www.berndorf-band.at

